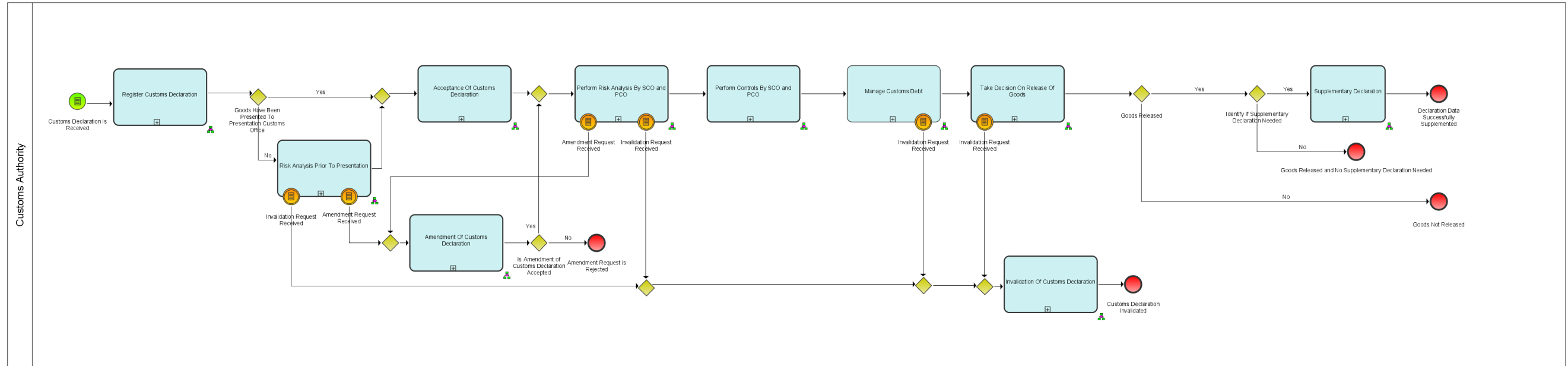
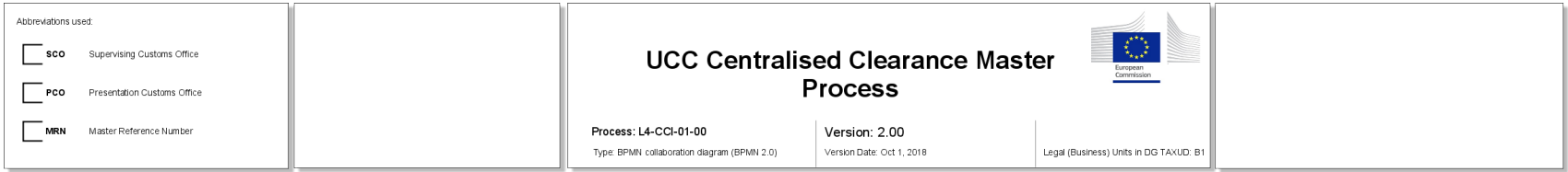
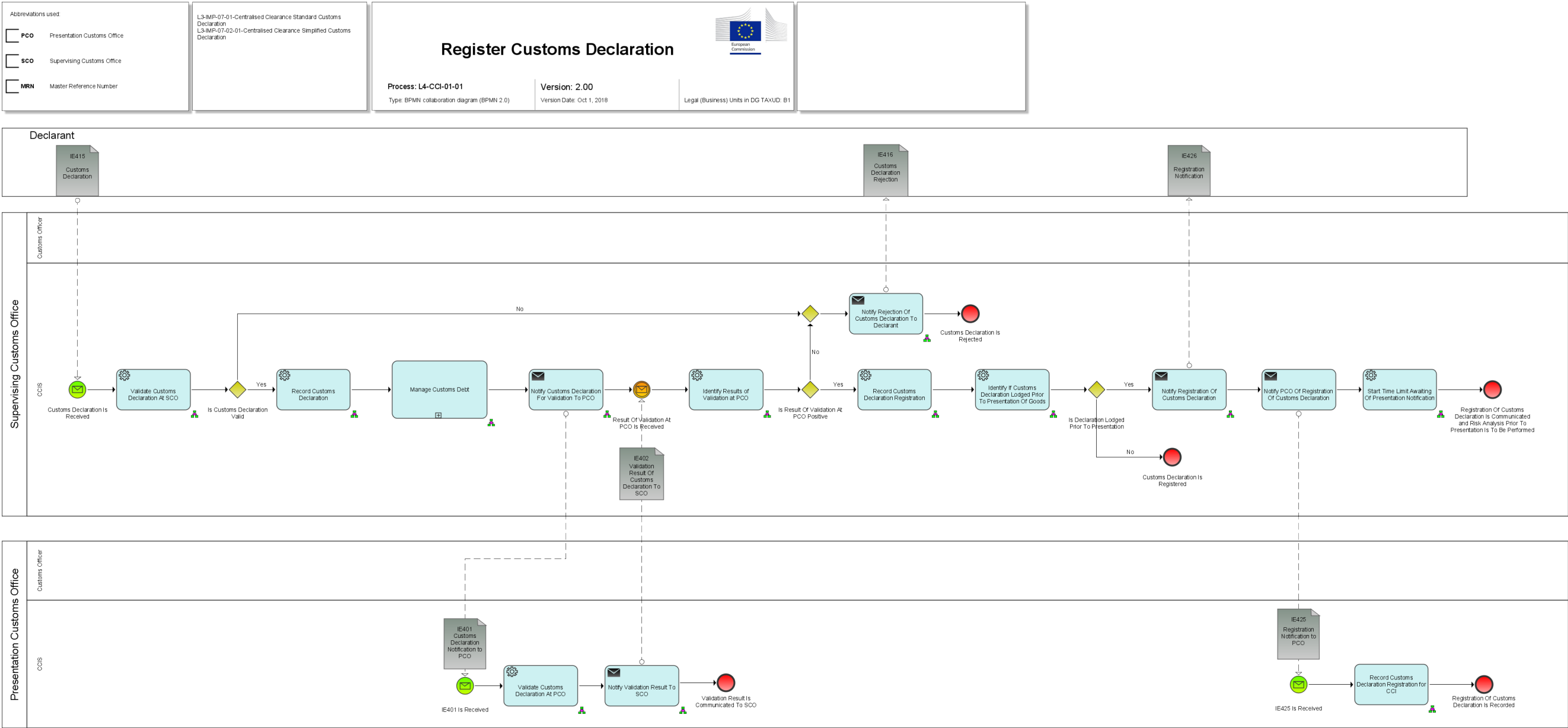


ANNEX 1: MODEL GRAPHICS

Process L4-CCI-01-00 UCC Centralised Clearance Master Process



Process L4-CCI-01-01-Register Customs Declaration



Process L4-CCI-01-02-Risk Analysis Prior To Presentation

Abbreviations used:

sco

Supervising Customs Office

pc

Presentation Customs Office

L3-IMP-07-01-Centralised Clearance Standard Customs Declaration
L3-IMP-07-02-01-Centralised Clearance Simplified Customs Declaration

Risk Analysis Prior To Presentation

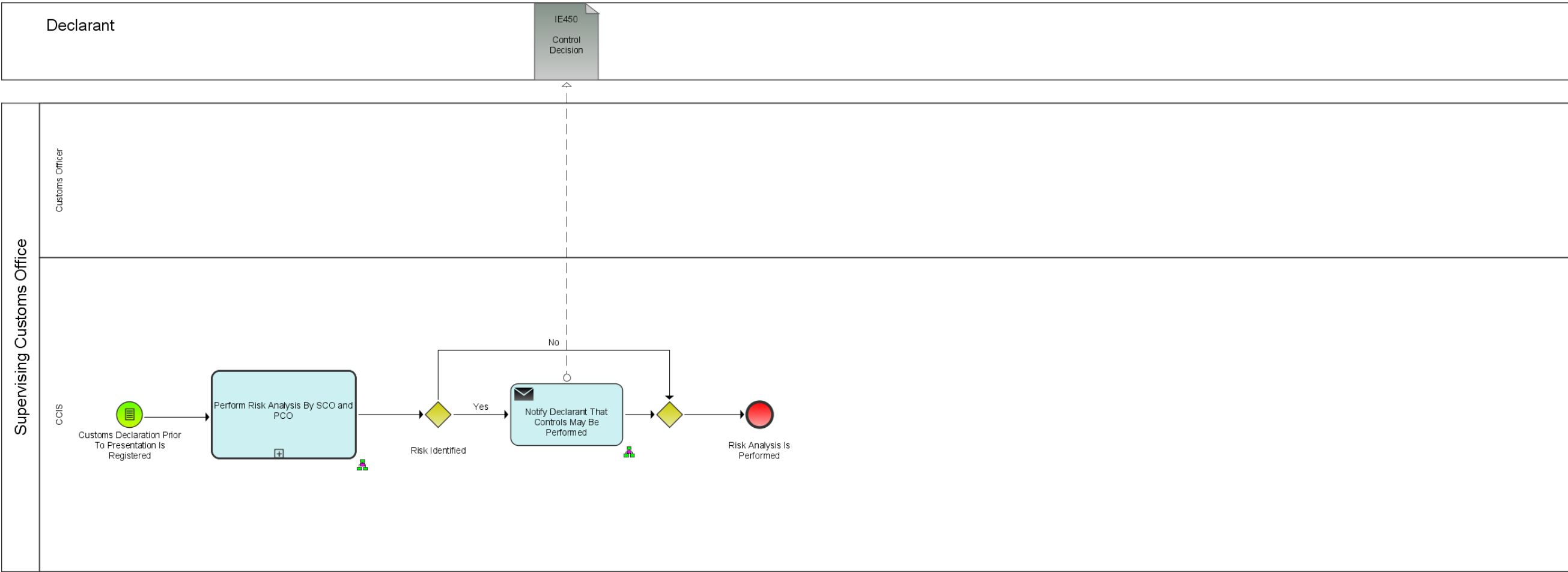
Process: L4-CCI-01-02

Version: 2.00

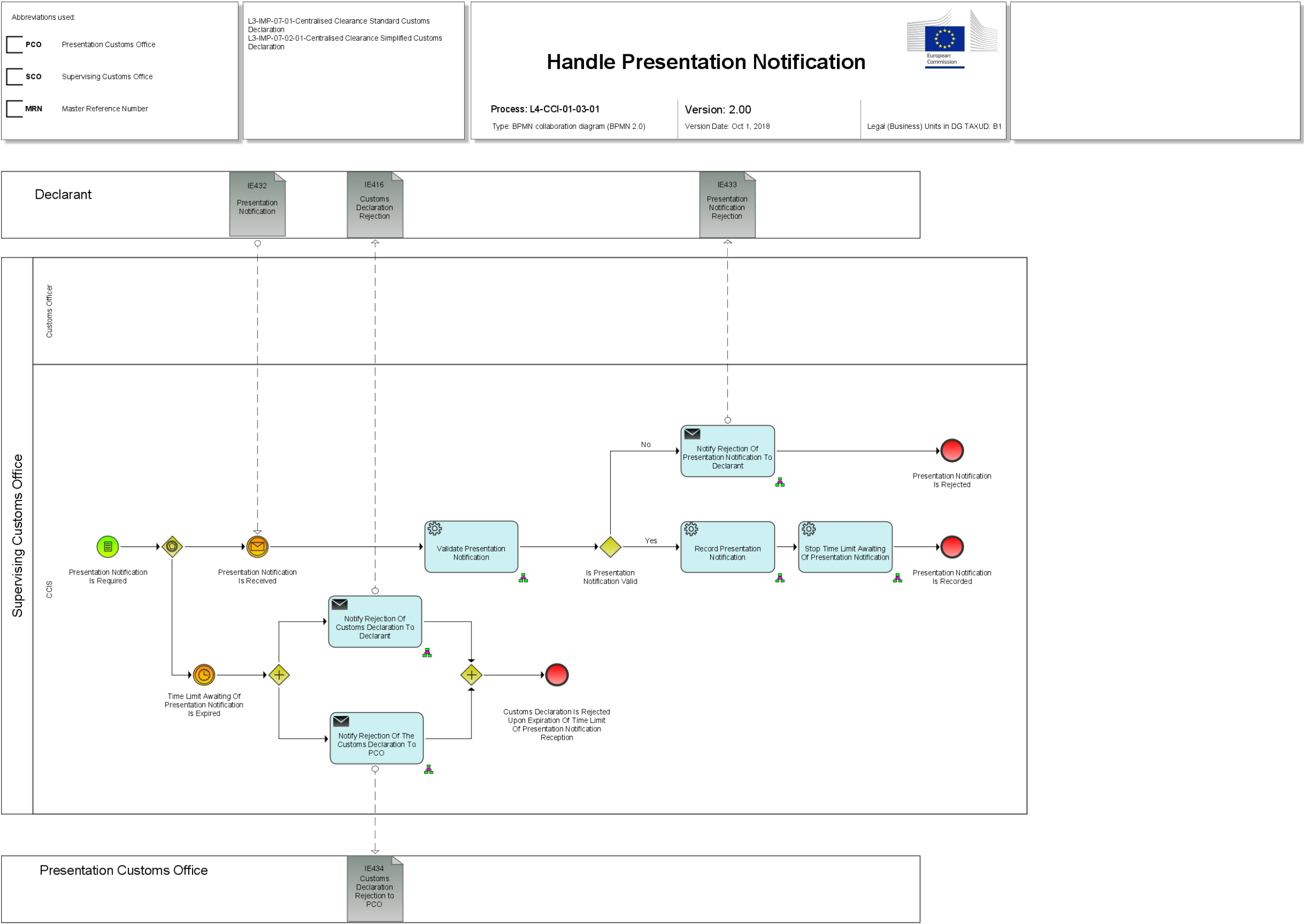
Type: BPMN collaboration diagram (BPMN 2.0)

Version Date: Oct 1, 2018

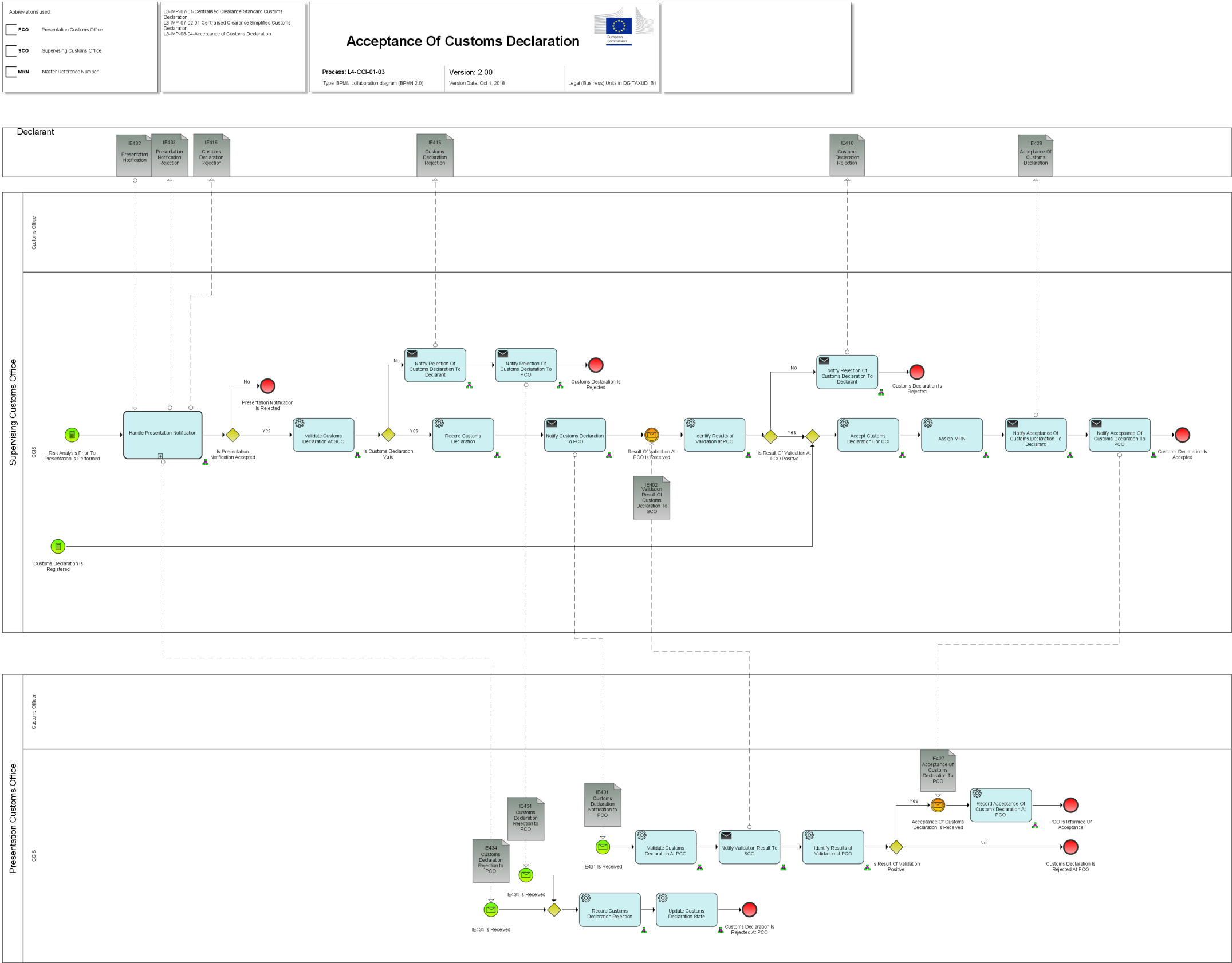
Legal (Business) Units in DG TAXUD: B1



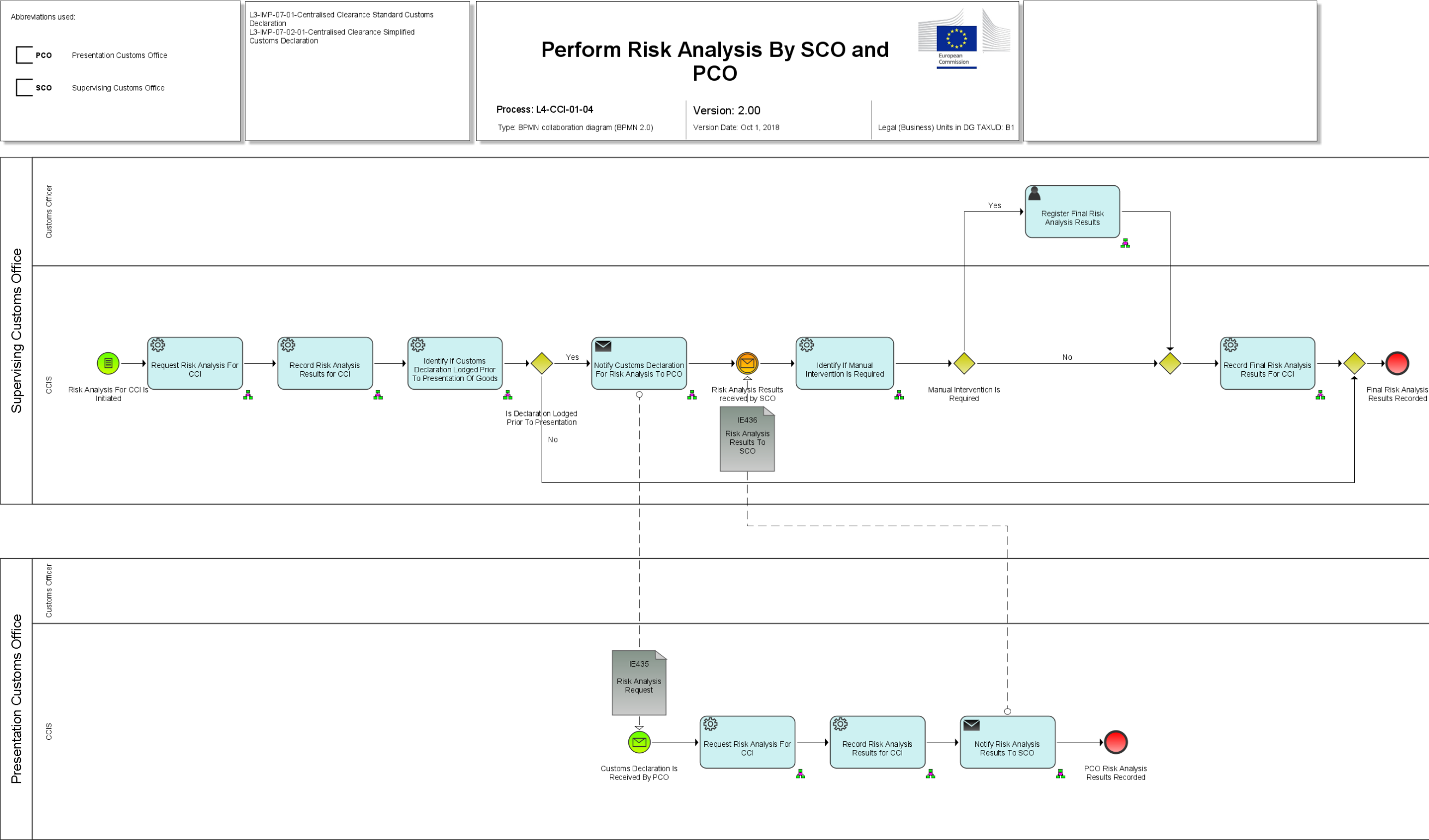
Process L4-CCI-01-03-01-Handle Presentation Notification



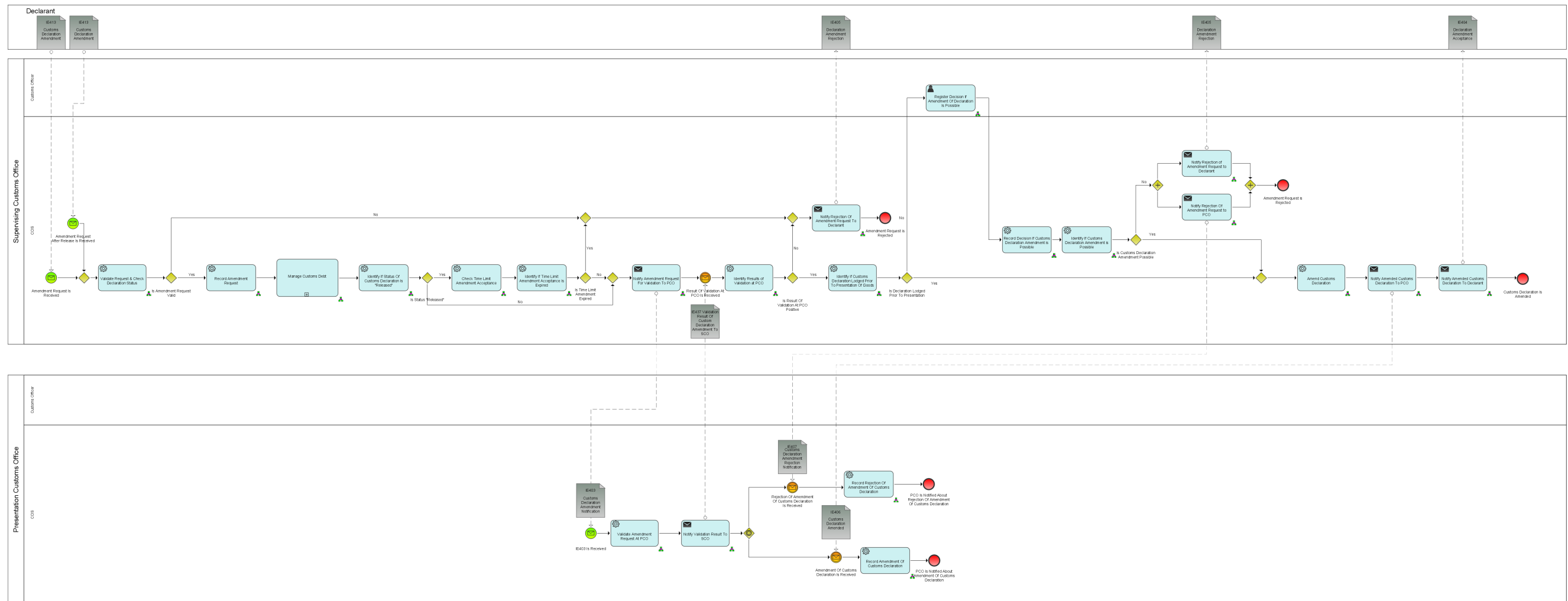
Process L4-CCI-01-03-Acceptance Of Customs Declaration



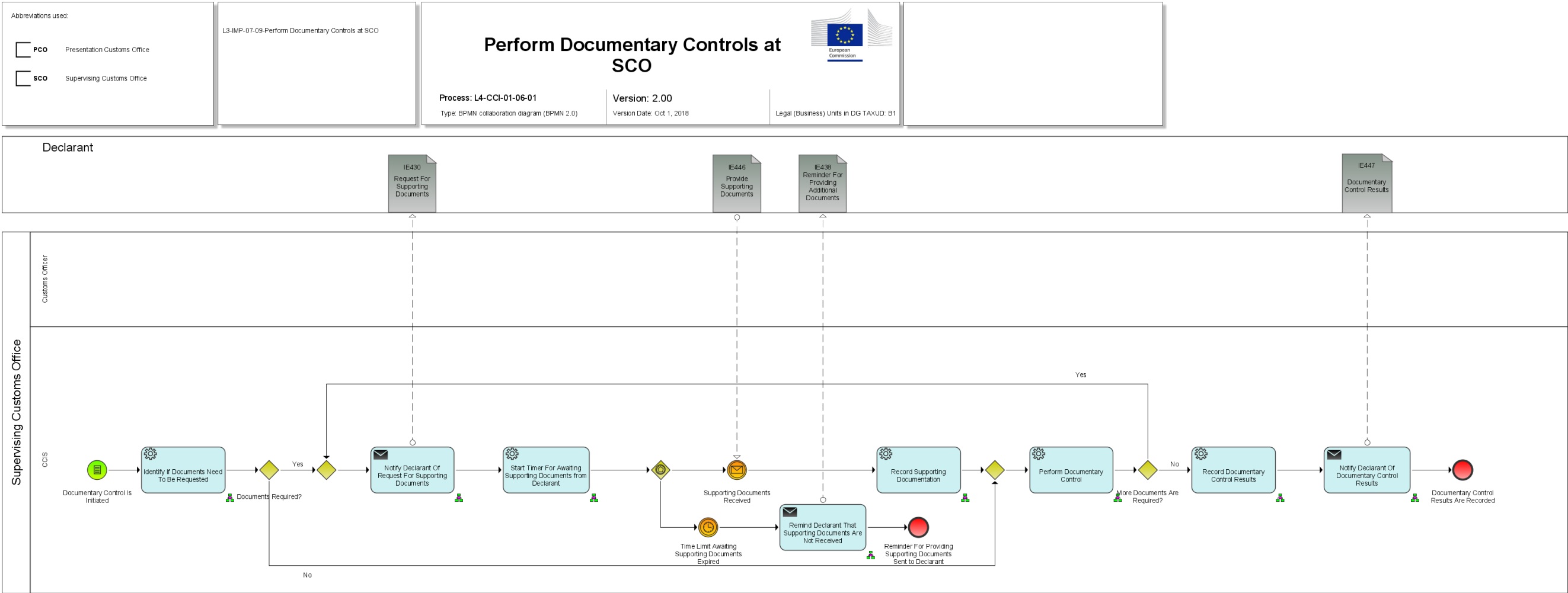
Process L4-CCI-01-04-Perform Risk Analysis By SCO and PCO



Abbreviations used  PCO Presentation Customs Office  SCO Supervising Customs Office	L3-MH-013-01 Controlled Clearance Standard Customs Declaration L3-MH-013-01 Controlled Clearance Simplified Customs Declaration L3-MH-013-01 Controlled Clearance Amendment of the Customs Declaration		
<h2>Amendment Of Customs Declaration</h2>			
Process L4-CC-01-05		Version 2.00	
Type BPMN collaboration diagram (BPMN 2.0)		Version Date: Oct 1, 2018	
		Legal (Business Units in DG TAXUD: B1)	



Process L4-CCI-01-06-01-Perform Documentary Controls At SCO



Process L4-CCI-01-06-03-Send Status Request

Abbreviations used:

sco

Supervising Customs Office

pco

Presentation Customs Office


Send Status Request

Process: L4-CCI-01-06-03

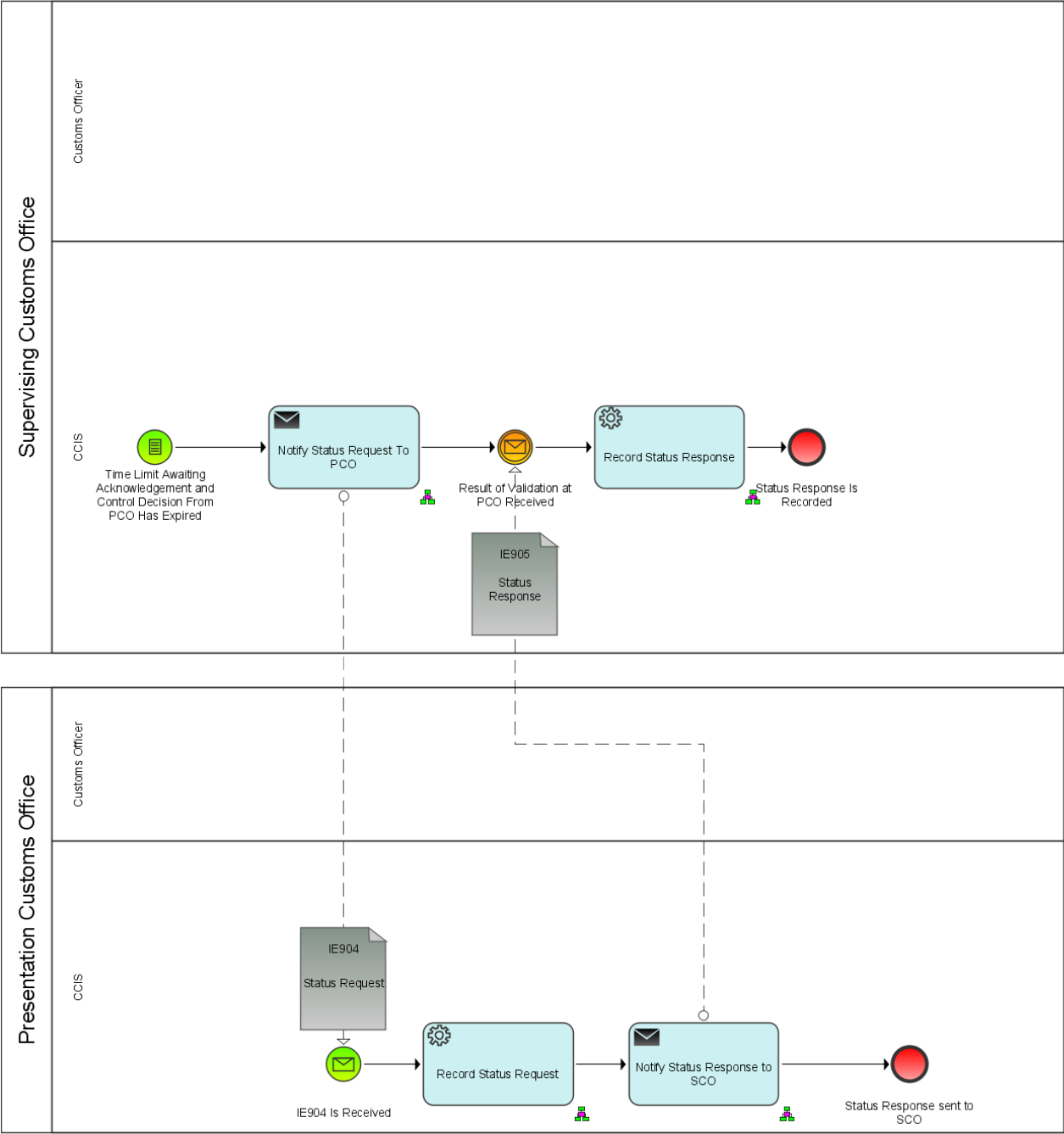
Type: BPMN collaboration diagram (BPMN 2.0)

Version: 2.00

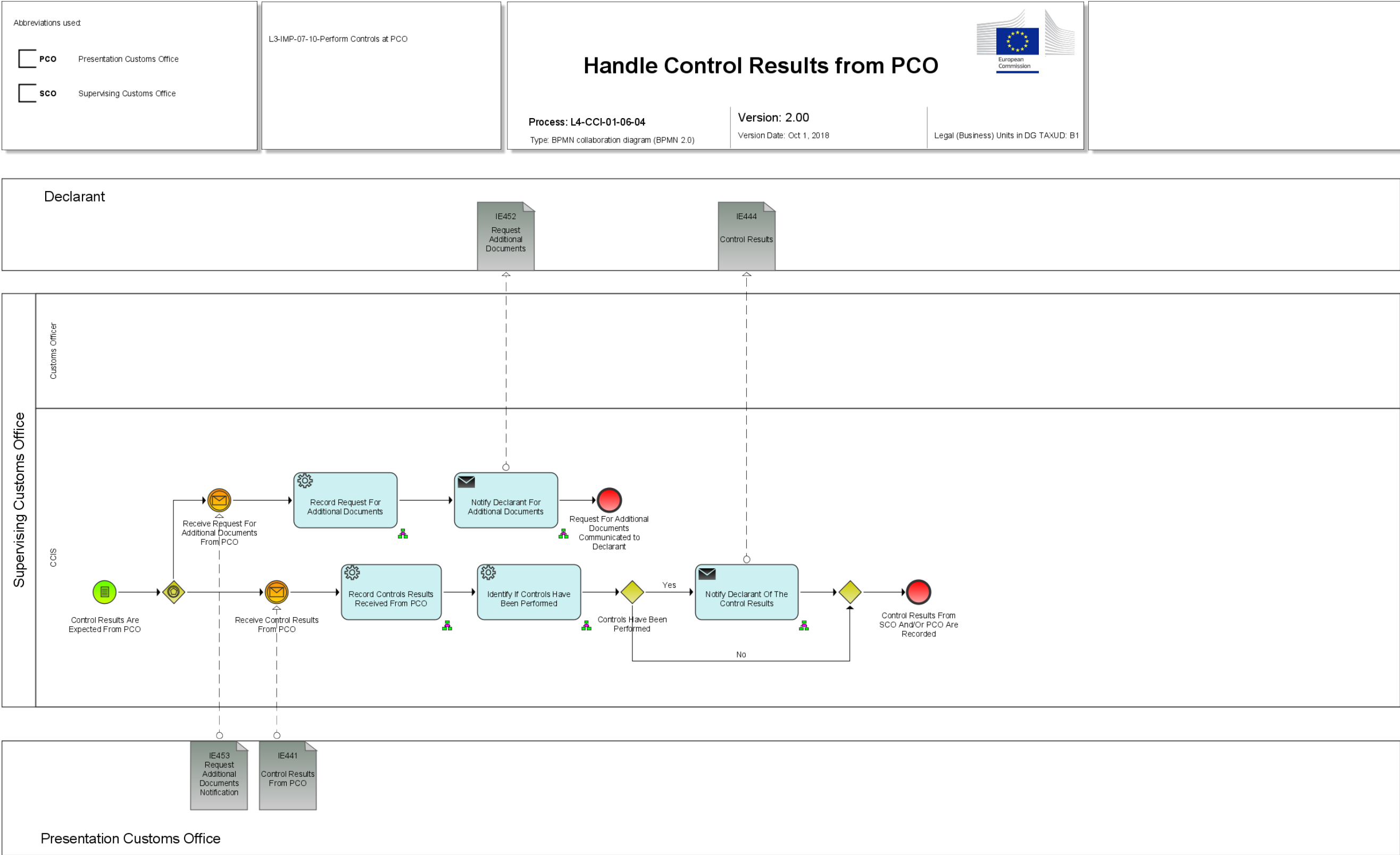
Version Date: Oct 1, 2018




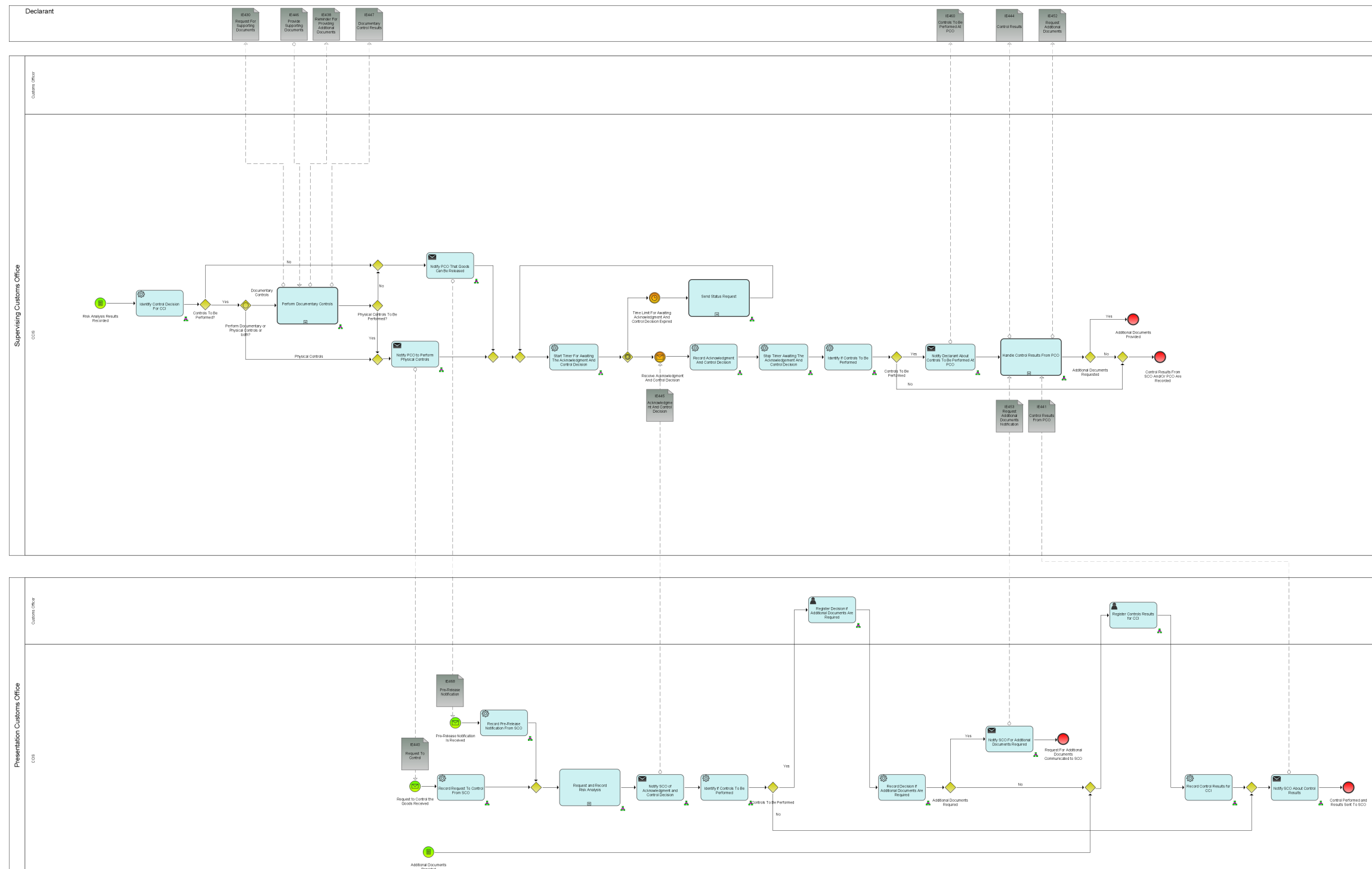
Legal (Business) Units in DG TAXUD: B1



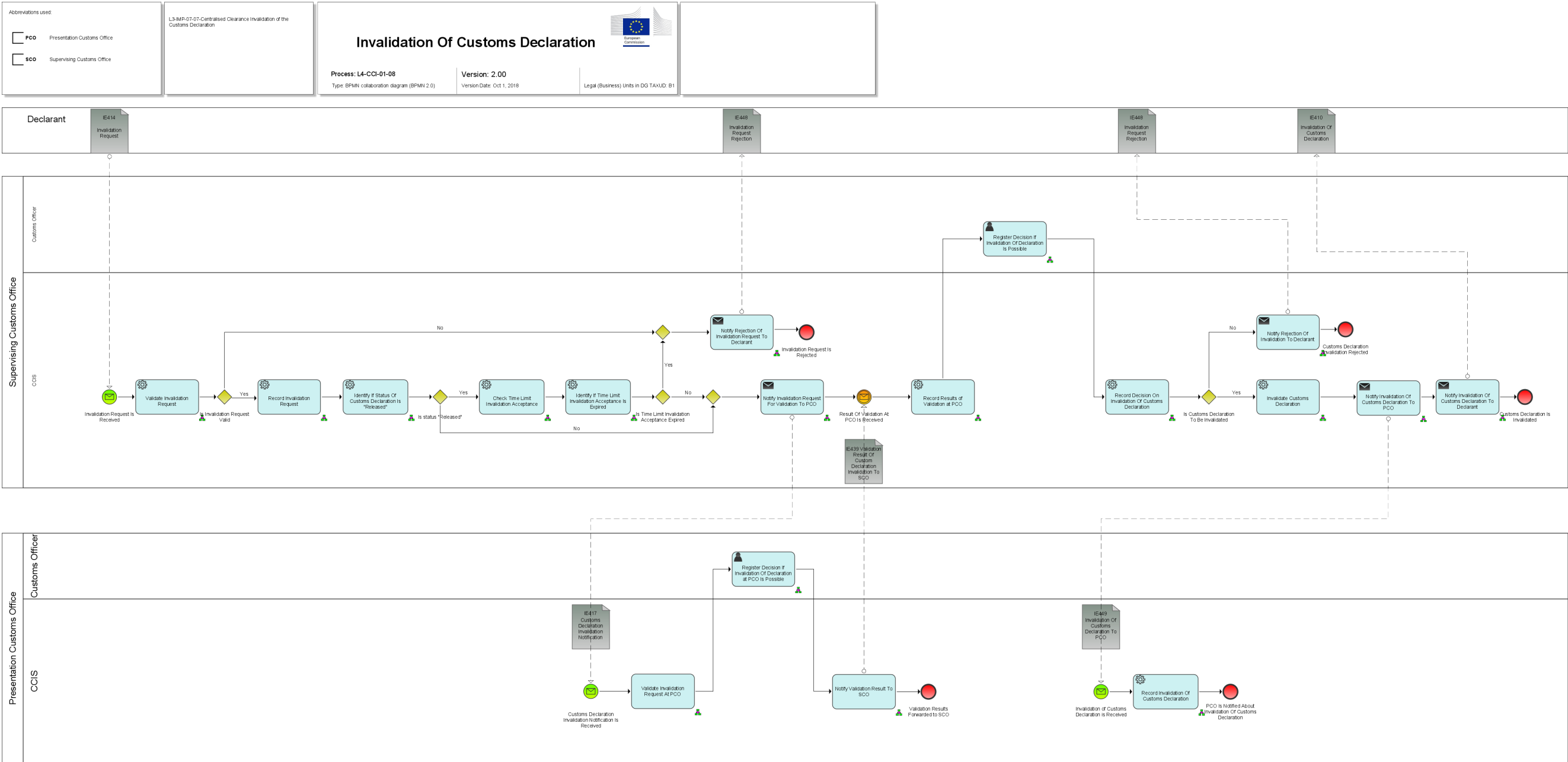
Process L4-CCI-01-06-04-Handle Control Results from PCO



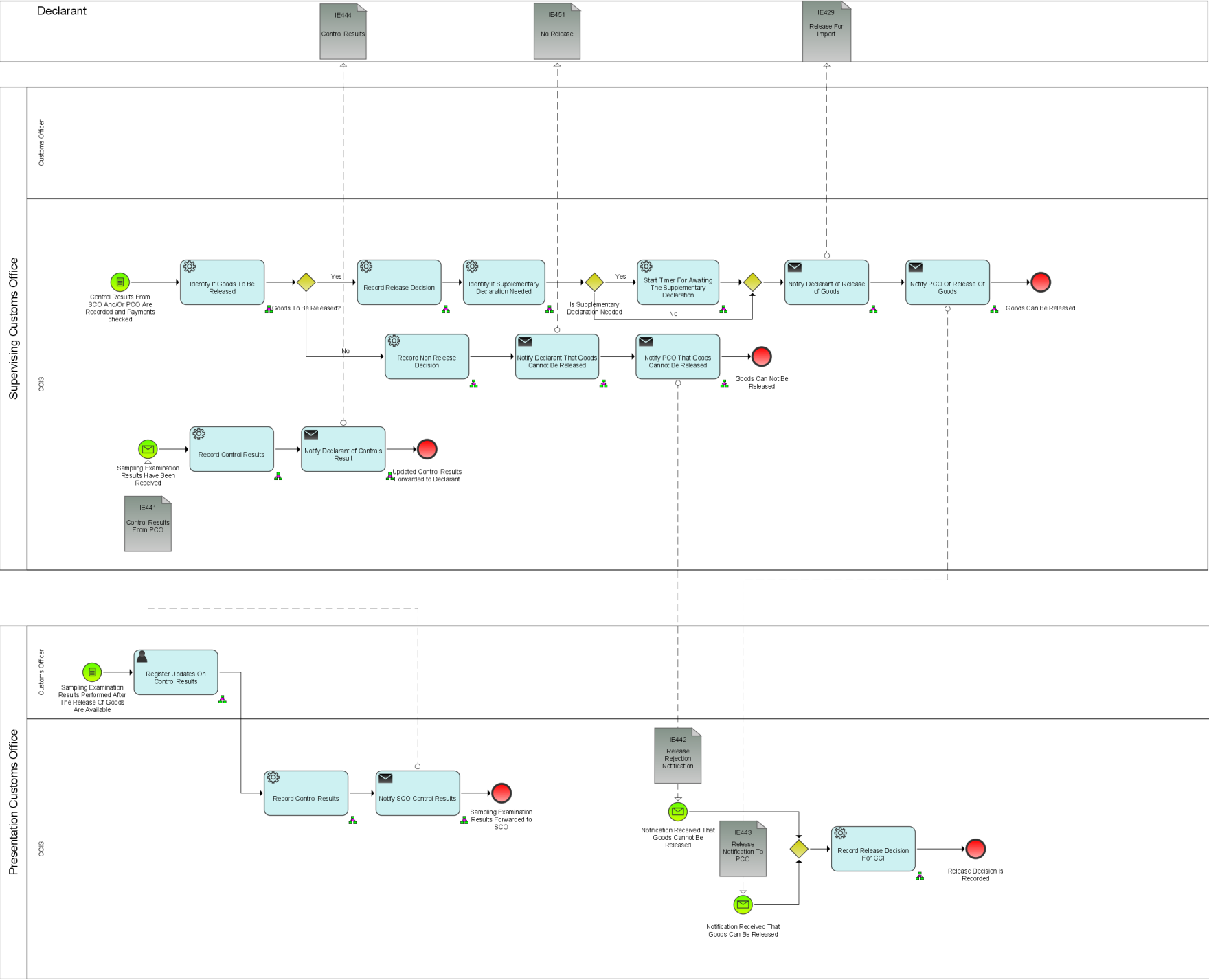
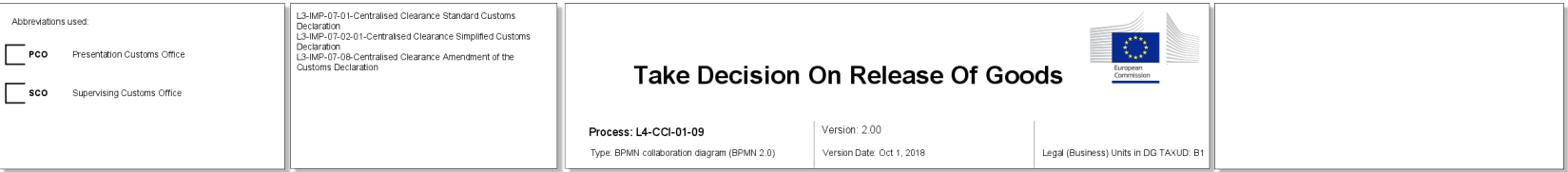
<p>Abbreviations used</p> <p>PCO Presentation Customs Office</p> <p>SCO Supervising Customs Office</p>	<p>LM-MP-07-01-Central Clearance (Standard Customs Declaration)</p> <p>LM-MP-07-02-Central Clearance (Simplified Customs Declaration)</p> <p>LM-MP-07-03-Central Clearance (Supplementary Customs Declaration)</p> <p>LM-MP-07-04-Patterns Documentary Controls at SCO</p> <p>LM-MP-07-10-Pattern Controls at PCO</p>	<div style="text-align: center;">  <h2>Controlled</h2> </div> <h1 style="text-align: center;">Presentation Controls by SCO and PCO</h1> <div style="display: flex; justify-content: space-between;"> <div> <p>Process: L4-CCI-01-06</p> <p>Type: BPMN collaboration diagram (BPMN 2.0)</p> </div> <div> <p>Version: 2.00</p> <p>Version Date: 01.1.2018</p> </div> <div> <p>Legal (Business): UN/ECE in DSD TAILOR 81</p> </div> </div>
--	---	--



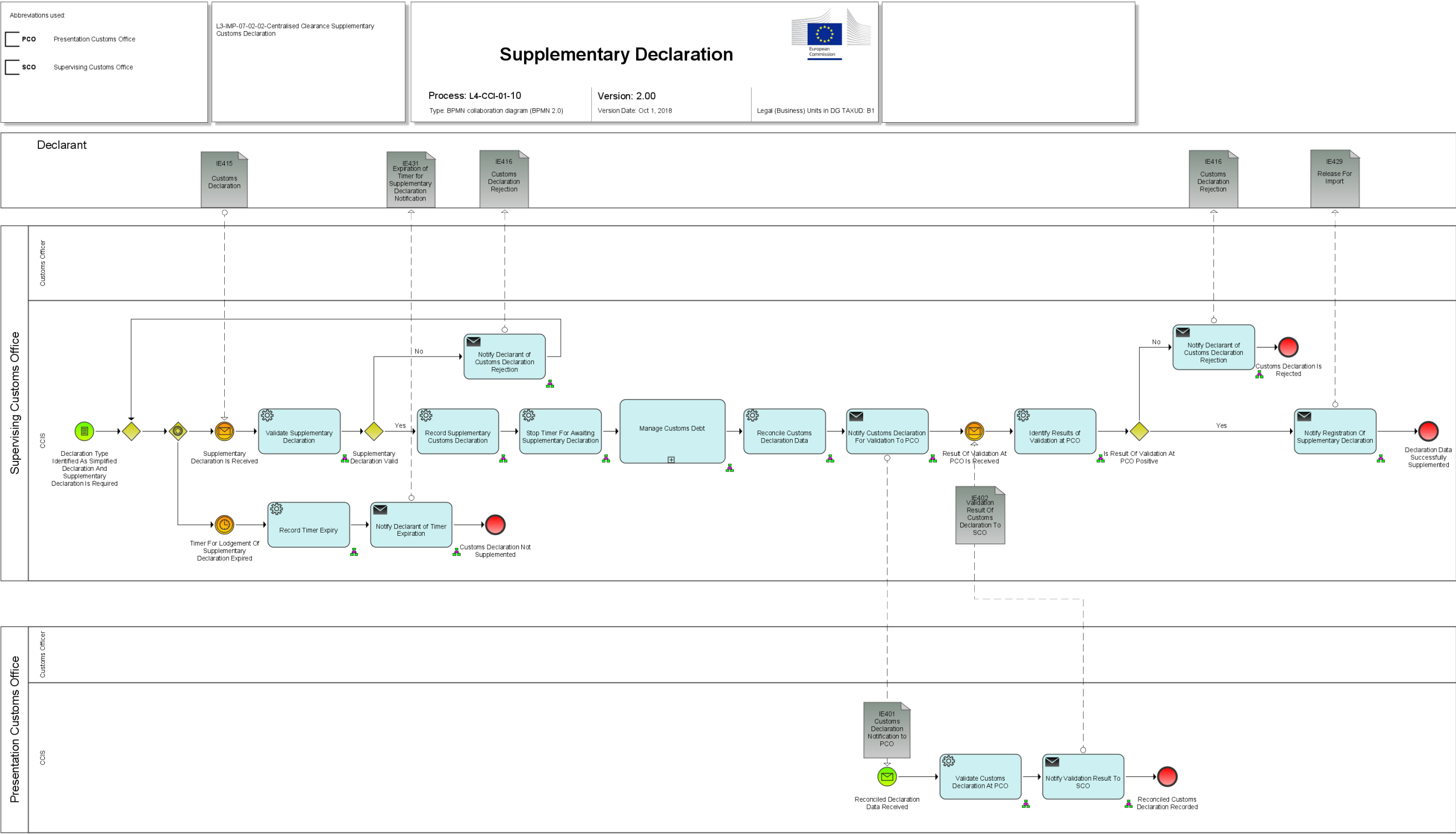
Process L4-CCI-01-08-Invalidation Of Customs Declaration



Process L4-CCI-01-09-Take Decision On Release Of Goods



Process L4-CCI-01-10-Supplementary Declaration



Process L4-CCI-01-06-02-Request and Record Risk Analysis

Abbreviations used: N/A

L3-IMP-07-01-Centralised Clearance Standard Customs Declaration
L3-IMP-07-02-01-Centralised Clearance Simplified Customs Declaration

Request and Record Risk Analysis

Process: L4-CCI-01-06-02

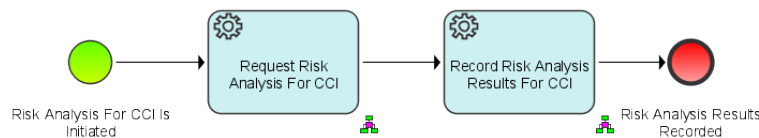
Type: BPMN process diagram (BPMN 2.0)

Version: 2.00

Version Date: Oct 1, 2018


European Commission

Legal (Business) Units in DG TAXUD: B1



Process L4-CCI-01-07-Manage Customs Debt

